

NEW YORK CITY DEPARTMENT OF EDUCATION
DIVISION OF SCHOOL FACILITIES
OFFICE OF BUILDING SERVICES

April 11, 2011

OFFICE OF BUILDING SERVICES CIRCULAR NO. 4 – 2010/11

NOTE: All Circulars are to be kept in a permanent file

TO ALL CUSTODIAN ENGINEERS AND BUILDING MANAGERS

T-12 Ballast Inspection Protocol

Polychlorinated biphenyls (PCBs) were utilized in the manufacture of construction and electrical materials before 1979. On April 17th, 2008, the Division of School Facilities issued P. O. Circular No. 5 – 2007/08 which addressed the potential concern of building caulk containing PCBs. As a reminder, Circular No. 5 – 2007/08 remains in effect, as does its required monthly inspection and reporting requirements.

The awareness of the potential presence of PCBs in the work place has now been expanded to include PCBs commonly found in magnetic lighting ballasts manufactured for T-12 fluorescent lighting fixtures up until 1979. A ballast is used primarily to regulate and keep constant the current supplied to the fixture. Ballasts generally consist of a reactor coil assembly, a thermal protection switch (after 1973) and a capacitor. Most PCBs in fluorescent light fixture magnetic ballasts are found in liquid form (as oil) within the capacitor. If the capacitor leaks, some PCBs may be absorbed into the potting compound (which is a brownish/black asphalt-silica mixture) that holds the capacitor in place. The potting compound may also contain PCBs. Additionally, PCBs may leak from the ballast housing and can appear as either a clear to yellowish oily substance, or the leaked potting material can appear as a thicker brownish-black tar like substance on the outside of the housing, or other components of the lighting fixture such as the ballast cover, exposed wiring, bulbs, screws, bolts, or light diffuser. Leaked material may also contaminate the floor or items directly below the fixture.

T-12 ballasts manufactured after 1979, contain a label or similar manufacturer's marking designating that no PCBs were used in the manufacturing process. If there is no label, or the label is illegible, the ballast should be assumed to contain PCBs. Non PCB containing T-12 magnetic ballasts continued to be manufactured for use as replacement ballasts for existing fixtures through July, 2010, after which they could no longer be manufactured. Beginning in the 1980s, electronic ballasts were introduced as an effective alternative to magnetic ballasts, but both magnetic and electronic T-12 ballasts continue to be used today. T-8 fluorescent light fixtures have commonly been used in new construction for decades. T-8 fluorescent lighting fixtures utilize only electronic ballasts, which do not contain PCBs.

In January, DSF directed that all Custodian Engineers and Building Managers conduct a visual inspection of all T-12 (not known T-8) fluorescent lighting fixtures in your facilities. This inspection must include all fixtures in the facility, including fixtures in classrooms, offices, corridors, stairwells, labs, cafeterias, resource rooms, maintenance areas, and storage areas. This inspection is an external inspection only and you are not to open any ballast covers or light diffusers to perform your inspection. Additionally, you are not to replace any T-12 ballasts for any reason (known T-8 ballasts should be handled normally). If visible staining, leakage, or discoloration is observed during your inspection, on either the fixture, including the screw or bolt holes, cover, exposed wiring, bulbs, diffuser, floor or items directly below the fixture, you are directed to report the location to your Deputy Director of Facilities, as well as submit a priority #4 work request for trade #75; requesting an expedited inspection through our Environmental Health and Safety Unit. Be sure to include specific detail regarding location, size (4 foot or 8 foot), type (wrap around, egg crate), number of fixtures, number of bulbs per fixture and type of bulb- i.e. single or bi pin, as well as any clarifying comments including whether the fixtures were replaced during a lighting upgrade post mid to late 1980s. Upon receipt of the priority work request, EHS will dispatch a licensed environmental firm to perform an internal inspection and address the reported issues identified in the work request. Do not submit priority #4 work requests unless visible staining, leakage or discoloration is observed.

Report all visible staining, leakage, or discoloration. Do not attempt to distinguish visible staining, leakage, or discoloration that may have been caused from sources (e.g., food, other liquids, rust) other than ballasts. If there are no visible signs of staining, leakage, or discoloration and you need to submit a work request for replacement of a number of T-12 ballasts, please use priority #71 for trade #2. Include the same level of detail as outlined above. Lastly, if you have magnetic T-12 ballasts that were removed and stored for future proper disposal, please submit a priority #71 work request for trade #75. Include sufficient detail such as electronic or magnetic ballasts as well as labeled Non PCB or assumed PCB and note whether any are leaking or have residue on the exterior surfaces or wiring.

As part of the environmental internal inspection wherein the ballast cover is removed and the ballast, fixture and components are inspected, the following steps are taken by our environmental firm. If the ballast is marked as containing NO PCBs and there are no visible signs of leakage, staining, or discoloration on the fixture or cover, no further action is required. If a PCB ballast is present but not leaking, and there are no visible signs of past leakage on the fixture or components, the ballast will be removed and properly disposed of in accordance with all Federal, State and local requirements at an Environmental Protection Agency (EPA) approved facility. If a PCB ballast is found to be leaking and there are no visible signs of leakage anywhere on the fixture or components, only the ballast will be removed and properly disposed of in accordance with the governing regulatory requirements listed above. If any visible sign of past ballast leakage is observed on an inspected fixture, the fixture is removed by the contractor and disposed of as assumed PCB contaminated material, in accordance with federal Environmental Protection Agency (EPA) regulations known as the Toxic Substance Control Act (TSCA). Replacement fixtures and/or ballasts with T-8 components will be installed by DSF within a few days of the inspection and removal of T-12 lighting components.

The environmental firm's employees inspecting and handling ballasts as an example, should protect the work area by spreading plastic sheeting under the fixture/s. All items being removed including, fixtures and covers that are PCB containing or assumed PCB containing, must be placed in plastic bags, sealed then placed in metal containers, removed from the premises and disposed of at an EPA approved facility. The contractor's employees engaged in this activity must minimally wear disposable protective gloves and eye protection. Additional personal protection may be provided through wearing nitrile gloves, which are required when handling leaking components. Proper hand washing with soap and water is also recommended, as is washing any clothing that comes in contact with PCB residue as soon as practical. Most importantly, anyone engaged in the removal of ballasts and or fixtures must also disconnect the ballast from the main power source by shutting the circuit breaker and employing lock out – tag out procedures.

During the normal discharge of your duties (especially when replacing fluorescent bulbs in T-12 fixtures), Custodian Engineers, Building Managers and custodial employees should continually look for signs of staining, leakage, or discoloration and report them as required by this circular. In addition, we will require an in depth annual inspection of all T-12 fixtures prior to school opening in September.

To view photographs of fluorescent ballast staining, visit the DSF website by clicking on the following link; [DSF Website: Fluorescent Light Ballast Staining](#)

Please contact your Deputy Director of Facilities (DDF) if you have any questions or concerns regarding this information.

John T. Shea

*Chief Executive Officer
Division of School Facilities*

NEW YORK CITY DEPARTMENT OF EDUCATION
DIVISION OF SCHOOL FACILITIES
OFFICE OF BUILDING SERVICES

December 21, 2016

ADDENDUM TO BUILDING SERVICES CIRCULAR NO. 4-2010/11 (T-12
Ballast Inspection Protocol)

NOTE: All circulars are to be kept in a permanent file

TO ALL CUSTODIAN ENGINEERS

Internal and External Inspection of Unit Ventilators

Be advised that unit-ventilators (univents) will now be required to be visually inspected by custodian engineers for polychlorinated biphenyls (PCBs). These inspections are to be immediately implemented during the first part of the upcoming holiday break. This visual inspection will require that each univent be both externally and internally inspected. For this inspection you are required to remove the front cover and inspect the internal housing and all other surfaces for historical staining or actively leaking electrical components, paying particular attention to the compartment which may contain an oil filled electrical capacitor. Please use the attached photographs as a reference when identifying potential sources of PCB fluid leakage within a univent.

If visible staining, leakage, or discoloration is observed during your inspections, on either the housing, blower, filter, bolt holes, cover, exposed wiring, floor or items immediately surrounding the univent, you are directed to secure the room and report the location to your deputy director of facilities. You are also to submit a priority #4 work request for trade #75; requesting an expedited inspection through our Environmental Health and Safety Unit (EHS). Upon receipt of the priority work request, EHS will dispatch a licensed environmental firm to address the reported issues identified in the work request. If the environmental firm finds that staining, leakage or discoloration may have been caused by potentially PCB-containing fluid, the *Re-occupancy Protocol for Unit Ventilator Fluid Leakage or Visible Smoke Emissions from the Unit Ventilator* will be followed. Custodian engineers are to report all visible staining, leakage, or discoloration. Do not attempt to distinguish visible staining, leakage, or discoloration that may have been caused from sources (e.g., food, other liquids, rust) other than oil filled capacitors.

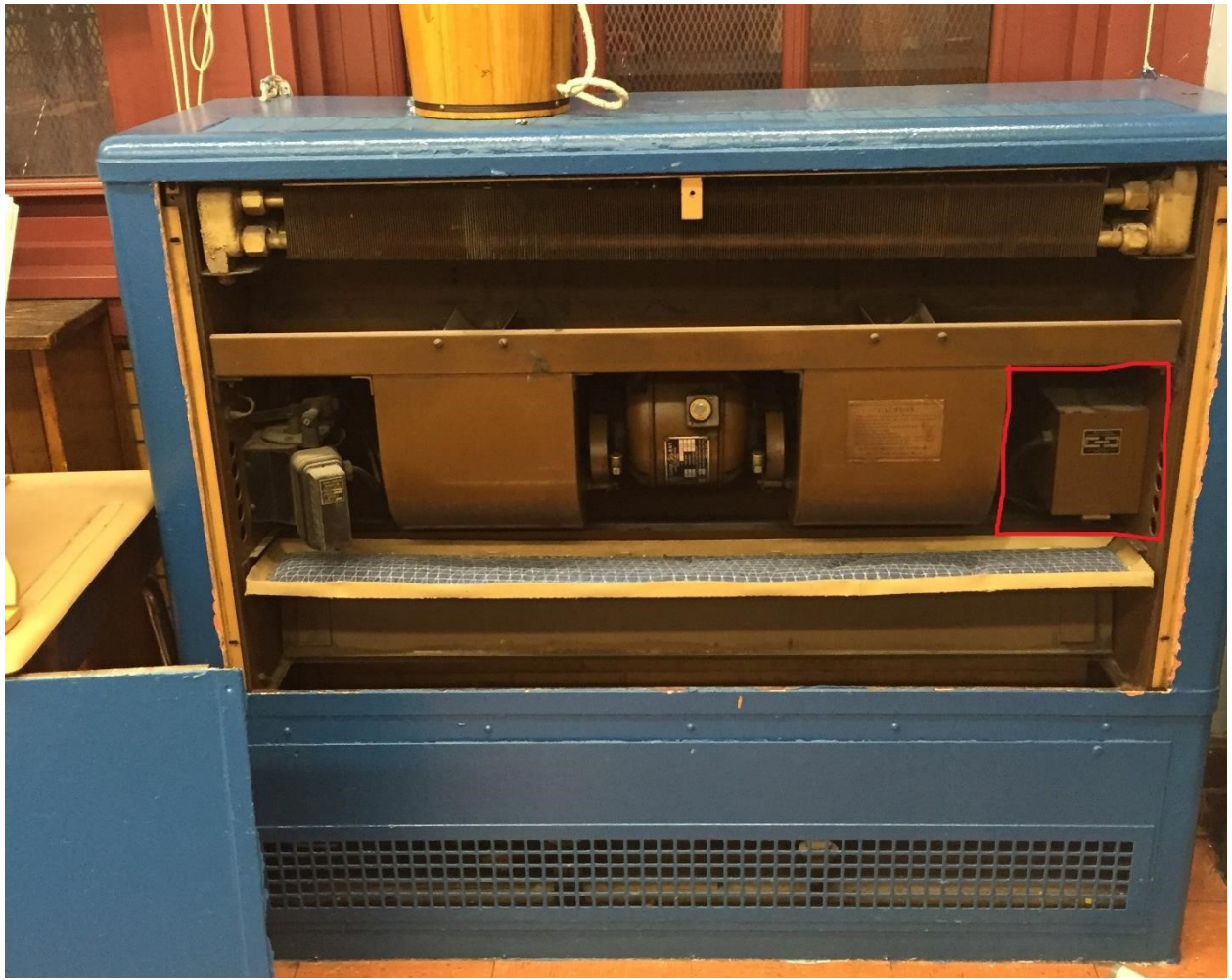
After this initial round of expedited inspections, custodian engineers must internally and externally inspect unit ventilators annually during the summer cleaning period when these units are cleaned and serviced.

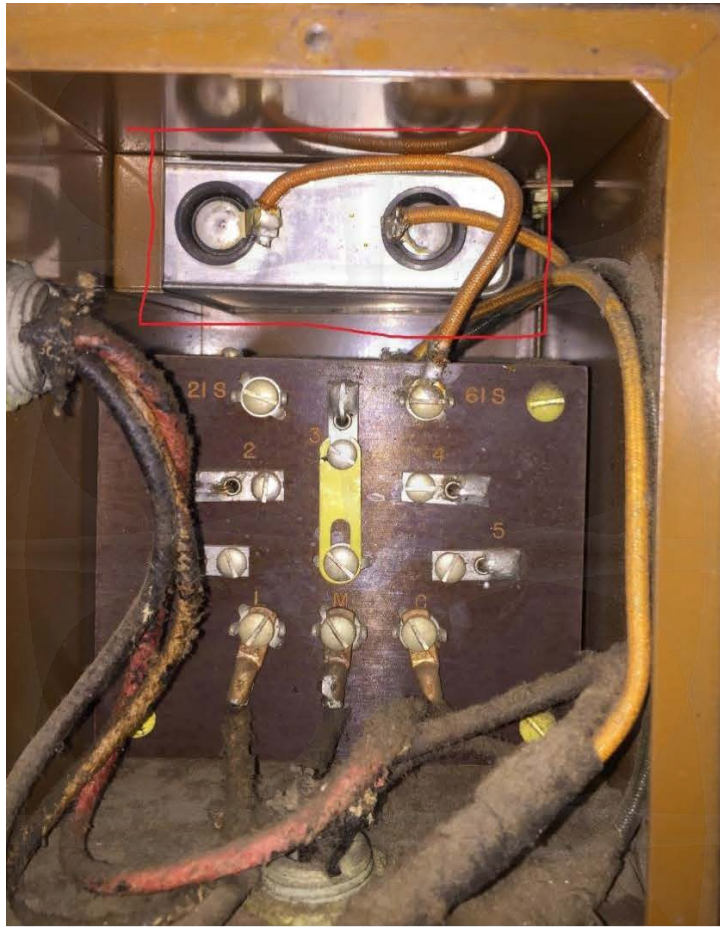
Going forward, if a unit ventilator emits visible smoke, or signs of leakage are detected, you are to immediately secure the affected unit ventilator, evacuate the room and contact your deputy director of facilities for further instructions.

John T. Shea

*Chief Executive Officer
Division of School Facilities*

SC/PN
Attachment (1)





NEW YORK CITY DEPARTMENT OF EDUCATION
DIVISION OF SCHOOL FACILITIES
OFFICE OF BUILDING SERVICES

January 17, 2017

ADDENDUM #2 TO BUILDING SERVICES CIRCULAR NO. 4 – 2010/11

NOTE: All circulars are to be kept in a permanent file

TO ALL CUSTODIAN ENGINEERS

T-12 Ballast Inspection Protocol

Inspection and Maintenance of T-12 Retrofitted Light Fixtures

A T-12 to T-8 retrofitted light fixture is defined as a light fixture housing that has remained in place, but has had the ballast and lamp connectors converted to accept a different type of lamp and ballast (i.e. T8). The attached listing identifies 209 buildings which may contain these retrofitted T-12 light fixtures.

Be advised that in limited instances some retrofitted T-12 light fixtures may have staining, leakage or discoloration which may have been caused by potentially PCB-containing fluid from a previously installed T-12 ballast. If visible staining, leakage, or discoloration is observed during inspections, lamp replacement or general maintenance, on either the fixture housing, lens cover, wiring or items immediately surrounding the light fixture, you are directed to report the location to your deputy director of facilities, as well as submit a priority #4 work request for trade #75; requesting an expedited inspection through our Environmental Health and Safety Unit (EHS). Upon receipt of the priority work request, EHS will dispatch a licensed environmental firm to address the reported issues identified in the work request. If the environmental firm finds that staining, leakage or discoloration may have been caused by potentially PCB-containing fluid, the contractor will remove the fixture. All impacted items will be disposed of in accordance with the Federal Environmental Protection Agency (EPA) regulations known as the Toxic Substance Control Act (TSCA). Custodian engineers are to report all visible staining, leakage, or discoloration. Do not remove the fixture or attempt to distinguish visible staining, leakage, or discoloration that may have been caused from sources (e.g., food, other liquids, rust) other than previously installed T-12 ballasts.

If you have additional questions regarding the content of this circular, please contact your deputy director of facilities.

John T. Shea
Chief Executive Officer
Division of School Facilities

Building .ID	CSD	BuldlnaName	BaOdlqAddrea	ZlpCode
K012	17	K012	430 HOWARD AVE	11233
K035	16	I.S. 35 - BROOKLYN	272 MACDONOUGH STREET	11233
K057	16	J.H.S. 57 - BROOKLYN	125 STUYVESANT AVENUE	11221
K072	19	P.S. 72 - BROOKLYN	605 SHEPHERD AVENUE	11208
K091	17	P.S. 91 - BROOKLYN	532 ALBANY AVENUE	11203
K092	17	P.S. 92 - BROOKLYN	601 PARKSIDE AVENUE	11226
K106	32	P.S. 106 - BROOKLYN	1328 PUTNAM AVENUE	11221
K107	15	P.S. 107 - BROOKLYN	1301 8TH AVENUE	11215
K145	32	P.S. 145 - BROOKLYN	100 NOLL STREET	11206
K151	32	P.S. 151 - BROOKLYN	763 KNICKERBOCKER AVENUE	11207
K152	22	P.S. 152 - BROOKLYN	725 EAST 23RD STREET	11210
K171	19	I.S. 171 - BROOKLYN	528 RIDGEWOOD AVENUE	11208
K174	19	P.S. 174 - BROOKLYN	574 DUMONT AVENUE	11207
K176	20	P.S. 176 - BROOKLYN	1225 69 STREET	11219
K179	20	P.S. 179 - BROOKLYN	202 AVENUE C	11218
K180	20	P.S. 180 - BROOKLYN	5601 16TH AVENUE	11204
K181	17	K181	1023 NEW YORK AVE	11203
K185	20	P.S. 185 - BROOKLYN	8601 RIDGE BLVD	11209
K188	21	P.S. 188 - BROOKLYN	3314 NEPTUNE AVENUE	11224
K197	22	P.S. 197 - BROOKLYN	1599 EAST 22 STREET	11210
K202	19	P.S. 202 - BROOKLYN	982 HEGEMAN AVENUE	11208
K203	22	P.S. 203 - BROOKLYN	5101 AVENUE M	11234
K204	20	P.S. 204 - BROOKLYN	8101 15 AVENUE	11228
K214	19	P.S. 214 - BROOKLYN	2944 PITKIN AVENUE	11208
K217	22	P.S. 217 - BROOKLYN	1100 NEWKIRK AVENUE	11230
K224	19	P.S. 224 - BROOKLYN	757 WORTMAN AVENUE	11208
K231	15	P.S. 231 - BROOKLYN	360 36TH STREET	11232
K241	17	P.S. 241 - BROOKLYN	976 PRESIDENT STREET	11225
K289	17	P.S. 289 - BROOKLYN	900 ST MARKS AVENUE	11213
K292	19	I.S. 292 - BROOKLYN	301 VERMONT STREET	11207
K309	16	P.S. 309 - BROOKLYN	794 MONROE STREET	11221
K324	16	I.S. 324 - BROOKLYN	800 GATES AVENUE	11221
K345	19	P.S. 345 - BROOKLYN	111 BERRIMAN STREET	11208
K377	32	P.S. 377 - BROOKLYN	200 WOODBINE STREET	11221
K391	17	I.S. 391 - BROOKLYN	790 EAST NEW YORK AVENUE	11203
K398	17	P.S. 398 (UDC) - BROOKLYN	60 EAST 94 STREET	11212
K399	17	K399	2707 ALBERMARLE ROAD	11226
K405	22	MIDWOOD HS - K	2839 BEDFORD AVENUE	11210
K420	19	FRANKLIN K. LANE HS - K	999 JAMAICA AVENUE	11208
K421	19	FRANKLIN K. LANE HS AF - BROOKLYN	999 JAMAICA AVENUE	11208

K445	20	NEW UTRECHT HS - BROOKLYN	1601 80 STREET	11214
K458	13	BOYSHS (OLD) - K	832 MARCY AVENUE	11216
K460	15	JOHN JAY EDUCATIONAL CAMPUS - K	237 7TH AVENUE	11215
K466	21	ERASMUS HALL HS AF - BROOKLYN	1325 EAST 2ND STREET	11230
K485	20	TELECOM .ARTS & TECH. - K	350 67 Street	11220
KS05	20	FRANKLIN D. ROOSEVELT HS - K	5800 20 AVENUE	11204
K515	18	SOUTH SHORE EDUCATIONAL COMPLEX - K	6565 FLATLANDS AVENUE	11236
K516	18	SOUTH SHORE HS AF - BROOKLYN	6565 FLATLANDS AVENUE	11236
K525	21	EDWARD R. MURROW HS - K	1600 AVENUE L	11230
KS40	21	JOHN DEWEY HS - K	50 AVENUE X	11223
KS55	22	BKLYN COLL ACAD (AT BKLYN COLL) - K	2900 BEDFORD AVENUE	11210
K625	17	ROBESON HS COMP&BUS TC (A HML) - K	150 ALBANY AVENUE	11213
K781	15	W. Brooklyn Community H.S. Childhood Center	1053 41st Street	11219
K799	32	East Bklyn H.S. - LEASE	271 Melrose Street	11206
K804	15	COBBLE HILL SCL OF AMR STD (OL6) - K	347 BALTIC STREET	11201
K840	17	P.S. 241 MINISCHOOL - BROOKLYN	976 PRESIDENT STREET	11225
K851	19	P.S. 159 MINISCHOOL - BROOKLYN	2781 PITKIN AVENUE	11208
K853	13	P.S. 93 AX (ECFBD STUY ECC2) - K	234 HERKIMER STREET	11216
K867	17	P.S. 138 AX (CROWN HOTS ECC 1) - K	960 PROSPECT PLACE	11216
K881	15	P.S. 1 MINISCHOOL - BROOKLYN	309 47 STREET	11220
K889	17	P.S. 189 MINISCHOOL - BROOKLYN	1100 EAST NEW YORK AVE	11212
K894	23	EBC/DHS Community LEASE	1495 Herkimer Street	11233
K993	23	PASSAGES ACADEMY (CROSSROADS) - K	17 BRISTOL STREET	11212
K994	13	The Bedford Academy LEASE	1119 Bedford Avenue	11216
K997	22	Comm. Superint of High Schools	1780 Ocean Avenue	11230
K999	22	CUNY RESEARCH VESSEL -	2001 ORIENTAL BLVD	11235
M020	1	20 - MANHATTAN	166 ESSEX STREET	10002
M118	3	S. 118 - MANHATTAN	154 WEST 93 STREET	10025
M136	5	.136 - MANHATTAN	5 EDGECOMBE AVENUE	10030

MI40	1	P.S. 140 -MANHATIAN	123RIDGE STREET	10002
M152	6	P.S. 152 -MANHATIAN	93NAGLE AVENUE	10040
M188	1	P.S. 188 - MANHATIAN	442 EAST HOUSTON STREET	10002
M190	2	P.S. 290 -MANHATIAN	311 EAST 82 STREET	10028
M195	5	TERENCE D. TOLBERT EDUCATION COMPLEX - MANHATIAN	625 WEST 133 STREET	10027
M380	6	P.S. 380- MANHATIAN	508 West 153 Street	0
M445	2	SEWARD PARK HS - MANHATIAN	350 GRAND STREET	10002
M451	2	LIBERTY HS -MANHATIAN	250 WEST 18 STREET	10011
M460	2	WASHINGTON IRVING HS - MANHATIAN	40 IRVING PLACE	10003
M475	2	HEALIH PROFESSIONS HS (OLSTY) -M	345 EAST 15 STREET	10003
M480	2	JULIA RICHMAN ED. COMPLEX -M	317 EAST 67 STREET	10021
M490	3	MARTIN LUTHER KING, JR HS -M	122AMSTERDAM AVENUE	10023
M528	6	I.S. 528 - MANHATIAN	180 WADSWORTH AVENUE	10033
M535	2	PARK WEST HS (ECF)- MANHATIAN	525 WEST 50 STREET	10019
M600	2	FASHION INDUSTRIES VOE HS -M	225 WEST 24 STREET	10011
M660	2	SCHL OF THE FUTURE (OLD BACON) -M	127 EAST 22 STREET	10010
M661	2	MNHT COMP NIGHT&DAY (OLBACN X)-M	240 2ND AVENUE	10003
M844	2	P.S. 138 ANNEX (OLD M047 AX) -M	400 1ST AVENUE	10010
M874	2	BARUCH COLLEGE CAMPUS H.S.	352 Park Ave. So. Aka 55 E. 25th St.	10010
Q038	29	P.S. 38 - QUEENS	135-21 241 STREET	11422
Q042	27	P.S. 42 - QUEENS	488 BEACH 66 STREET	11692
Q045	27	P.S. 45 - QUEENS	126-28 150 STREET	11436
Q056	27	P.S. 56 (OLD R HILL AX) - QUEENS	86-10 114TH STREET	11418
Q062	27	P.S. 62 - QUEENS	97-25 108 STREET	11419
Q063	27	P.S. 63 - QUEENS	90-15 SUTTER AVENUE	11417
Q064	27	P.S. 64 - QUEENS	82-01 101 AVENUE	11416
Q071	24	P.S. 71 - QUEENS	62-85 FOREST AVENUE	11385
Q073	24	I.S. 73 - QUEENS	70-02 54 AVENUE	11378
Q081	24	P.S. 81 - QUEENS	559 CYPRESS AVENUE	11385
Q086	28	P.S. 86 - QUEENS	87-41 PARSONS BLVD	11432
Q089	24	P.S. 89 - QUEENS	85-28 BRITTON AVENUE	11373
Q093	24	I.S. 93 - QUEENS	66-56 Forest Avenue	11385

Q098	26	P.S.98 - QUEENS	40-20 235 STREET	11363
Q102	24	P.S.11.S. 102 - QUEENS	55-24 VAN HORN STREET	11373
0106	27	P.S. 106 - QUEENS	180 BEACH 35 STREET	11691
Q114	27	P.S. 114 - QUEENS	134-01 CRONSTON AVE	11694
Q141	30	I.S. 141 - QUEENS	37-11 21 AVENUE	11105
Q146	27	P.S. 146 - QUEENS	98-01 159 AVENUE	11414
Q154	25	P.S. 154 - QUEENS	75-02 162 STREET	11366
Q155	27	P.S. 155 - QUEENS	130-02 115 AVENUE	11420
'Q174	28	P.S. 174 - QUEENS	65-10 DIETERLE CRESCENT	11374
Q198	27	I.S. 198 - QUEENS	3-65 BEACH 56 STREET	11692
Q202	27	I.S. 202 - QUEENS	138-30 LAFAYETTE SIREET	11417
Q207	27	P.S. 207 - QUEENS	159-15 88 STREET	11414
Q214	25	P.S. 214 - QUEENS	31-15 140 STREET	11354
Q216	26	J.H.S. 216 - QUEENS	64-20 175 STREET	11365
Q226	27	I.S. 226 - QUEENS	121-10 ROCKAWAY BLVD	11420
Q232	27	P.S. 232 - QUEENS	153-23 83 STREET	11414
Q237	25	J.H.S. 237 - QUEENS	46-21 COLDEN STREET	11355
Q322	24	P.S. 14 ANNEX - QUEENS	89-11 43RD AVENUE	11373
Q400	27	AUGUST MARTIN HS - QUEENS	156-10 BAISLEY BLVD	11434
Q401	27	AUGUST MARTIN HS AF - QUEENS	156-10 BAISLEY BLVD	11434
Q405	26	BAYSIDE HS - Q	32-24 CORPORAL KENNEDY STREET	11361
Q410	27	BEACH CHANNEL HS - Q	100-00 BEACH CHANNEL DRIVE	11694
Q420	29	SPRINGFIELD GARDENS HS - Q	143-10 SPRINGFIELD BLVD	11413
IQ421	29	SPRINGFIELD GDNS HS AF - QUEENS	143-10 SPRINGFIELD BLVD	11413
Q425	25	JOHN BOWNE HS - QUEENS	63-25 MAIN STREET	11367
Q430	26	FRANCIS LEWIS HS - Q	58-20 UTOPIA PKWY	11365
Q445	30	WILLIAM C. BRYANT HS - Q	48-10 31 Avenue	11103
Q455	24	NEWTOWN HS - QUEENS	48-01 90 STREET	11373
Q462	25	FLUSHING MEMORIAL AF - QUEENS	27-01 149 STREET	11354
Q471	28	JAMAICA HS AF - QUEENS	167-01 GOTHIC DRIVE	11432
Q480	27	JOHN ADAMS HS - QUEENS	102-10 ROCKAWAY BOULEVARD	11417
Q485	24	GROVER CLEVELAND HS - Q	21-27 HIMROD STREET	11385
Q487	24	CLEVELAND HS AF NO. 1 - QUEENS	21-27 HIMROD STREET	11385
Q488	24	CLEVELAND AF NO. 2 - QUEENS	18-08 WILLOUGHBY AVENUE	11385

IQ530	24	INTERNATIONAL HS (BLDG M @LAGUA)-Q	31-IOTHOMSON AVENUE	11101
Q535	7	ERIC M TAYWR CENTER - QUEENS	18-00HAZEN STREET	11370
Q721	24	P.S. 16(OLD Q721 SPED) - QUEENS	41-15 104STREET	11368
Q744	24	High School/Art Leather Bldg LEASE	45-10 94th St. 11373	11373
Q750	27	AVIATION HS ANNEX - QUEENS	141 JFK AIRPORT, BUILDING #141	11434
'0789	7	ERIC M TAYLOR CENTER - QUEENS	10-10HAZEN STREET	11370
Q806	27	P.S. 106MINISCHOOL - QUEENS	180 BEACH 35 STREET	11691
Q814	28	P.S.82 ANNEX - QUEENS	108-43 Sutphin Boulevard	11435
Q848	24	P.S. 81 ANNEX (OLD 75) - QUEENS	511 SENECA AVENUE	11385
Q850	28	P.S.50MINISCHOOL - QUEENS	143-26 101 AVENUE	11435
Q859	25	REGION 3/ROC C - QUEENS	30-48 Linden Place	11354
Q866	28	PS 99 LEASE	83-34 Kew Gardens Rd.	11415
Q878	24	PS 128 Annex LEASE	63-25 69th Street	11379
Q884	27	PS65 LEASE	103-22 99th St.	11417
Q901	7	ADOLESCENT RECEPTION DET. CTR - Q	11-11 HAZEN STREET	11370
Q902	7	ROSEMSINGER CENTER - QUEENS	19-19 HAZEN STREET	11370
Q973	28	P.S. 196ANNEX - QUEENS	112-15 71 ROAD	11435
Q985	7	HORIZON EDUCATIONAL FACILITY - Q	15-15 HAZEN STREET	11370
R002	31	S. 2 - STATEN ISLAND	333 MIDLAND AVENUE	10306
R007	31	S. 7 - STATEN ISLAND	1270 HUGUENOT AVENUE	10312
R019	31	P.S. 19 - STATEN ISLAND	780 POST AVENUE	10310
R024	31	S. 24 - STATEN ISLAND	225 CLEVELAND AVENUE	10308
R026	31	P.S. 26 - STATEN ISLAND	4108 VICTORY BLVD	10314
R027	31	S. 27 - STATEN ISLAND	11 CLOVE LAKE PLACE	10310
R034	31	S. 34 (OLD TOTIENVILLE) - SJ	528 ACADEMY AVE	10307
R038	31	P.S. 38 - STATEN ISLAND	421 LINCOLN AVENUE	10306
ROSI	31	S. 51 - STATEN ISLAND	20 HOUSTON STREET	10302
R061	31	S. 61 - STATEN ISLAND	445 CASILETON AVENUE	10301
R069	31	S. 69 - STATEN ISLAND	144 KEATING PLACE	10314
R072	31	.72 - STATEN ISLAND	33 Ferndale Avenue	10314
R450	31	HS - STATEN	105 HAMILTON AVENUE	10301

R460	31	SUSANE. WAGNER HS - S.I.	1200 Manor Road	10314
X008	10	P.S. 8 - BRONX	3010 BRIGGS AVENUE	10458
X016	11	P.S. 16 - BRONX	4550 CARPENTER AVENUE	10470
X026	10	P.S. 396 - BRONX	1930 ANDREWS AVENUE	10453
X028	9	P.S. 28 - BRONX	1861 ANTHONY AVENUE	10457
X033	10	P.S. 33 - BRONX	2424 JEROME AVENUE	10468
X044	12	P.S. 44 - BRONX	1825 PROSPECT AVENUE	10457
X058	9	P.S. 58 - BRONX	459 EAST 176TH STREET	10457
X059	IO	P.S. 59 - BRONX	2185 BATHGATE AVENUE	10457
X074	8	I.S. 201 - BRONX	730 BRYANT AVENUE	10474
X080	10	LS. 80/P.S. 280 - BRONX	149 EAST MOSHOLU PKWY N	10467
X085	IO	P.S. 85 - BRONX	2400 MARION AVENUE	10458
X088	9	P.S. 88 - BRONX	1340 SHERIDAN AVENUE	10456
X089	11	P.S. 89 - BRONX	980 MACE AVENUE	10469
XO%	11	P.S. 96 - BRONX	2385 OLINVILLE AVENUE	10467
X097	11	P.S. 97 ADDITION - BRONX	1375 MACE AVENUE	10469
X098	12	I.S. 98 - BRONX	1619 Boston Road	10460
X103	11	P.S. 103 - BRONX	4125 CARPENTER AVENUE	10466
X109	9	P.S. 109 - BRONX	1771 POPHAM AVENUE	10453
X115	10	LS. 399 (OLD XHS/115) - BRONX	120 EAST 184 STREET	10468
X118	10	I.S. 118 - BRONX	577 EAST 179 STREET	10457
X120	8	I.S. 301 - BRONX	890 CAULDWELL AVENUE	10456
X122	10	P.S. 310 - BRONX	260 WEST KINGSBRIDGE RD	10463
X141	10	M.S./H.S. 141 - BRONX	660 WEST 237 STREET	10463
X143	10	I.S. 143 - BRONX	120 WEST 231 STREET	10463
X159	10	P.S. 159 - BRONX	2315 Washington Avenue	10457
X205	10	P.S. 205A (ECF) - BRONX	2475 SOUTHERN BLVD	10458
X400	9	MORRIS HS - X	1110 BOSTON RD	10456
X405	8	HERBERT H. LEHMAN HS - X	3000 EAST TREMONT AVENUE	10461

X410	9	WILLIAM H. TAFT HS - X	240 EAST 172 STREET	10457
X415	11	HS - X	925 ASTOR AVENUE	10469
X416	11	COLUMBUS HS AF - BRONX	925 ASTOR AVENUE	10469
X425	11	EVANDER CHILDS HS - X	800 East Gun Hill Road	10467
X426	11	CHILDS HS AF - BRONX	800 EAST GUN HILL ROAD	10467
X450	8	EDUCATIONAL CAMPUS - X	1980 LAFAYETTE AVENUE	10473
X451	8	STEVENSON HS AF - BRONX	1980 LAFAYETTE AVENUE	10473
X660	10	GRACE H. DODGE VOE HS - X	2474 CROTONA AVENUE	10458
X819	10	P.S. 207 - BRONX	3030 GODWIN TERRACE	10463
X832	10	P.S. 32 MINISCHOOL - BRONX	690 EAST 183 STREET	10458
X843	10	P.S. 246 (POE CENTER) - BRONX	2641 GRAND CONCOURSE	10468
X886	10	P.S. 86 ANNEX - BRONX	124 Eames Place	10468
X939	10	P.S. 33 ANNEX - BRONX	2392 JEROME AVENUE	10468
X991	7	PASSAGES ACADEMY (HORIZON) - BRONX	560 BROOK AVENUE	10455